

## KTM special suspension tools



### T101S

Dis- / ass. plier spring 4681/3612.  
With pin T101A.

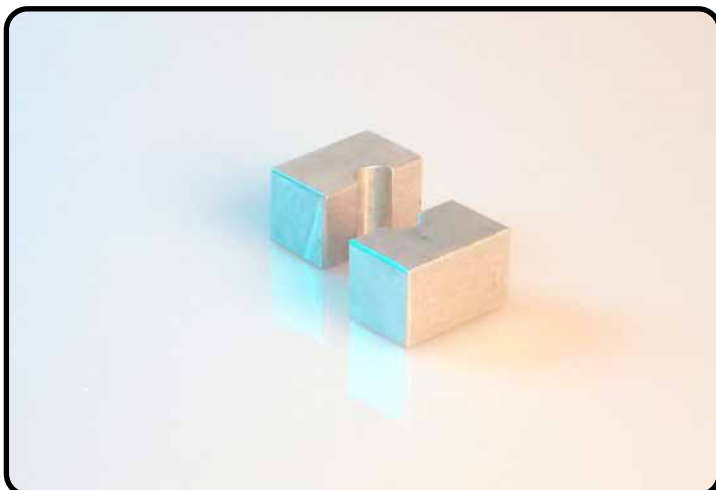
- All shock absorbers.



### T103

Pin spanner adjustable d4.

- Frontfork with PA.



### T104S

Clamping block d14.

- Shock absorber with d14mm  
piston-rod.

Special tools



**T106**

Open spanner steel.

- 4681 and PDS shock absorbers.



**T107S**

Depth stop.

- All shock absorbers.



**T108**

Assembling tool oilseal d14.

- 4681 shock absorber.

Special tools



**T109**  
Center pin.  
*- 4054 frontfork.*



**T110S**  
Plunger d46mm.  
*- 4681 shock absorber.*



**T120**  
Disassembling tool adaptor bush.  
*- All shock absorbers.*

Special tools



**T121**

Disassembling tool heim joint 4681.

- 3612 and 4681 shock absorber.



**T122**

Dis- / assembling tool heim joint.

- 3612 and 4681 shock absorber.



**T125S**

Pin spanner 4681/3612.

With 4 pins d4x15 / T126.

- 3612 and 4681 shock absorber.

Special tools



**T129**  
Assembling tool KGW heim joint.  
- 3612 and 4681 shock absorber.



**T131**  
Loctite 243 (50cc.)



**T132**  
Loctite 2701 (50cc.)

Special tools



**T137S**  
Squeeze bottle.



**T144S**  
Air release bottle.  
- 3612, 4681 and PDS <2002.



**T145S**  
Dis- / assembling tool screw-cap reservoir.  
With 2 pins d5x15 / T135.  
- All shock absorbers with reservoir.

Special tools



**T146**

Dis- / assembling tool tube / reservoir.

- All shock absorbers.



**T147**

Clamping bush d52.

- 4681 shock absorber.



**T148**

Clamping bush d50.

- 4681 and PDS shock absorber.

Special tools



**T149**

Calibration thorn d14.

- 3612 and 4681 shock absorber.



**T150S**

Dis- / assembling tool DU-bush d14.

- 3612 and 4681 shock absorber.



**T152**

Belray molykote antiseize.

- 3612 and 4681 shock absorber.



Special tools



**T155**  
Assembling tool circlip 4681.

- 4681 shock absorber.

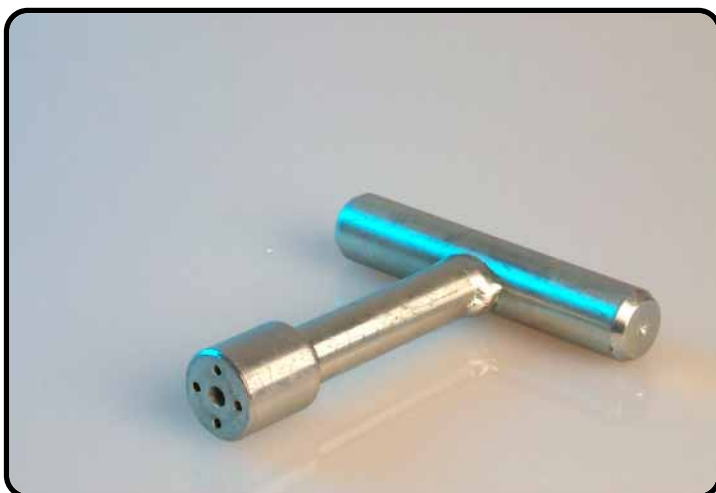


**T158**  
Grease for O-rings and reservoir.

Special tools



**T159**  
Waterproof grease.



**T160**  
Assembling tool CC-mechanism.  
- 3612, 4681 and PDS <2001 shock absorber.



**T165**  
6 in 1 Belray.

Special tools



**T169**

Assist tool for EMU dampers.

- 3612 BAEM shock absorber.



**T170S**

Nitrogen charging device 2000.  
On picture with T169.

- All shock absorbers.

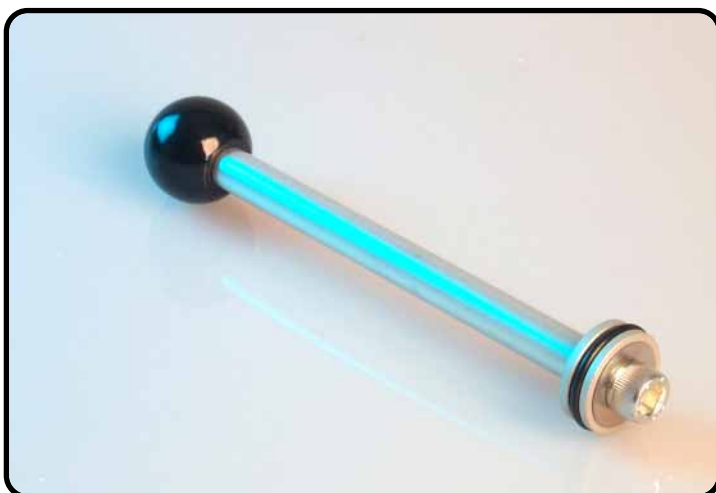
Special tools



**T304**

Steel spanner 3612.

- 3612 shock absorber.



**T306S**

Plunger 36mm.

- 3612 BAVP shock absorber.



**T313**

Assembling tool 3612 oilseal d14.

- 3612 shock absorber.

Special tools



**T315**

Clamping bush d48.

- 3612 BAVP shock absorber.



**T316**

Clamping bush d40.

- 3612 BAVP shock absorber.

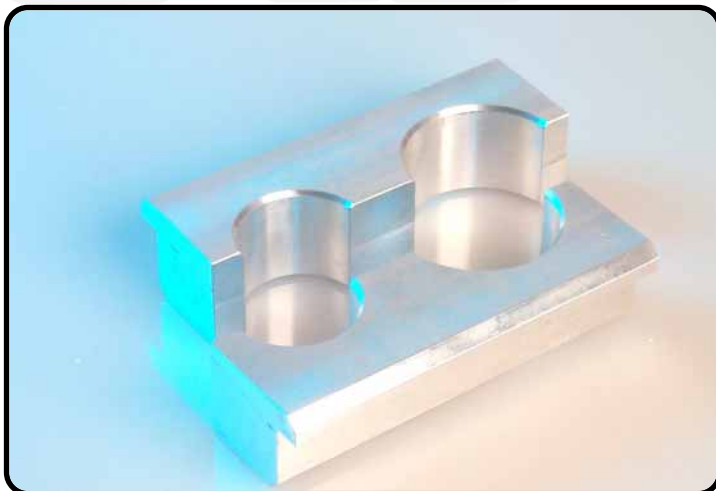


**T317**

Assembling tool circlip 3612.

- 3612 shock absorber.

Special tools



**T501S**

Clamping block d43/d56.

- 43mm frontfork.

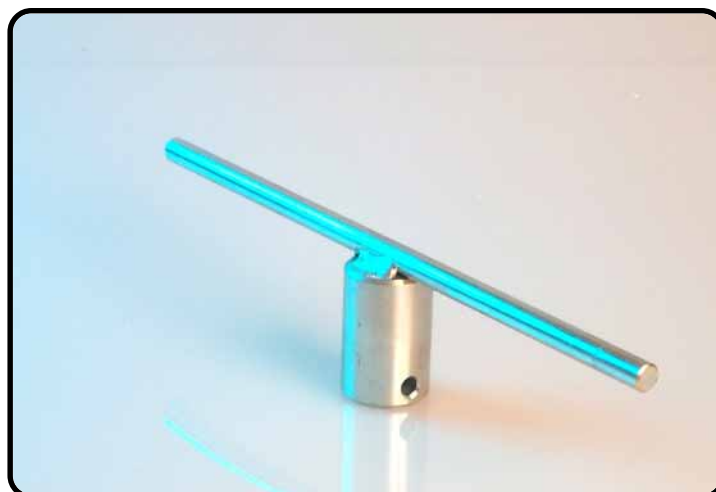


**T502S**

Mounting tool oilseal, bearing en dustcap.

With 2 pins d3.

- 43mm frontfork.

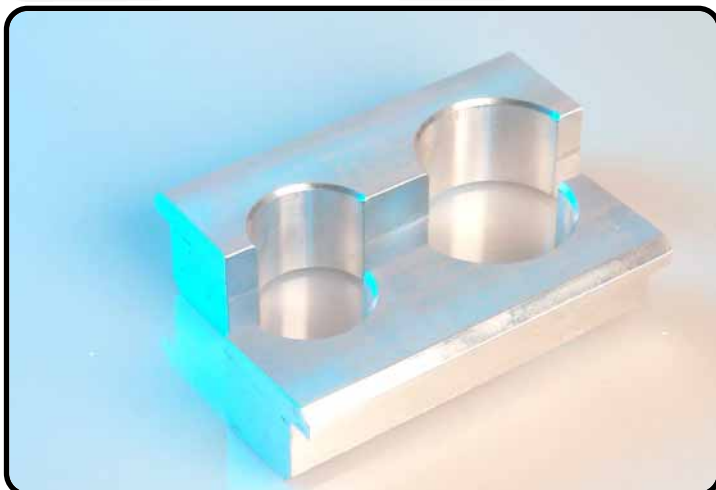


**T503S**

Dis- / assembling tool inner-tube 43mm.  
In combination with T605.

- 43mm frontfork.

Special tools



**T506S**  
Clamping block d43/d57.

- 43mm frontfork.



**T507**  
Dis- / assembling tool DU-bush d14.

- 4357, 4860 MXMA - ROMA frontfork.



**T508S**  
Clamping block tube MXMA.  
With 2 pins d5x24 / T613.

- 4357, 4860 MXMA - ROMA frontfork.



Special tools



**T509**

Adaptor tube MXMA.

- 4357, 4860 MXMA - ROMA frontfork.



**T511**

Grease for seals.

- 4357, 4860 MXMA - ROMA frontfork.



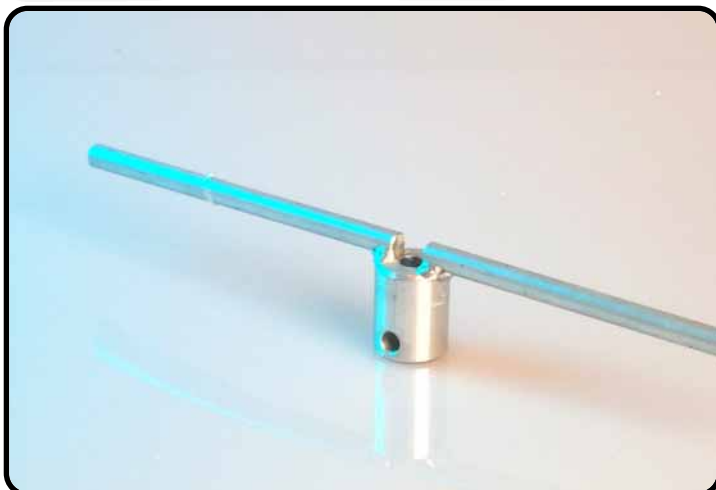
**T512**

Assembling tool oilseal 43mm.

- 4357 frontfork.



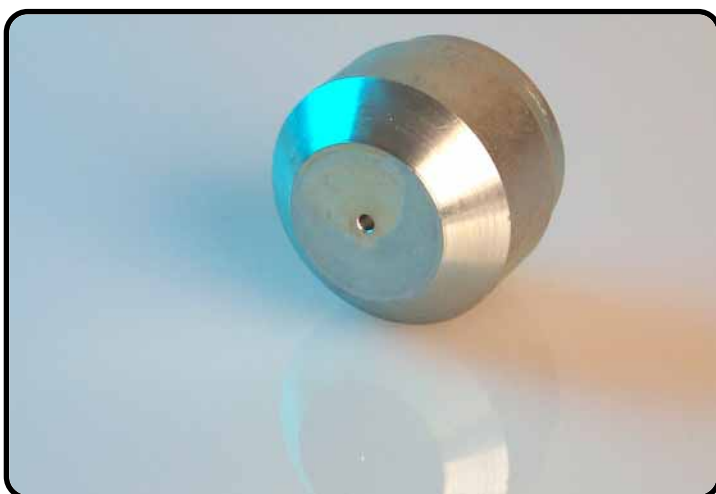
Special tools



**T601S**

Dis- / assembling tool inner-tube 40mm.  
In combination with T605.

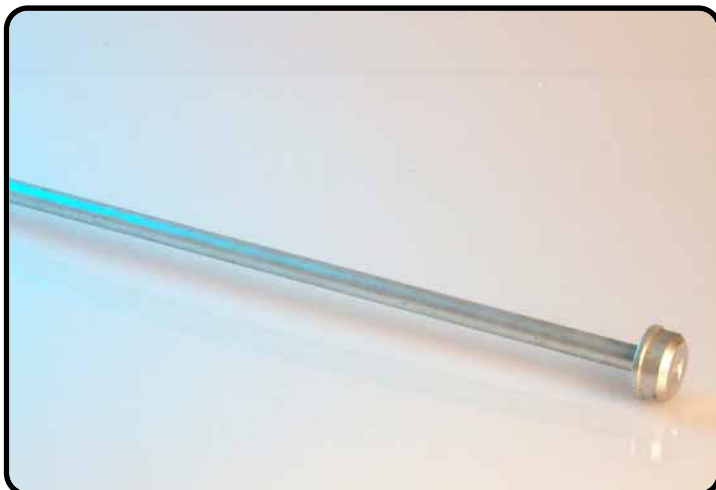
- 4054 frontfork.



**T603**

Assembling tool Oilseal 40mm.

- 4054 frontfork.

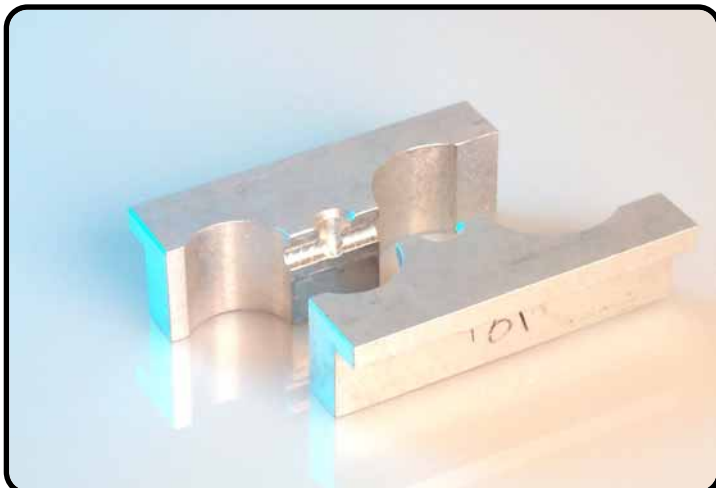


**T604**  
Disassembling tool DU-bush 40mm.  
- 4054 frontfork.



**T610**  
Assembling tool DU-bush 40mm.  
- 4054 frontfork.

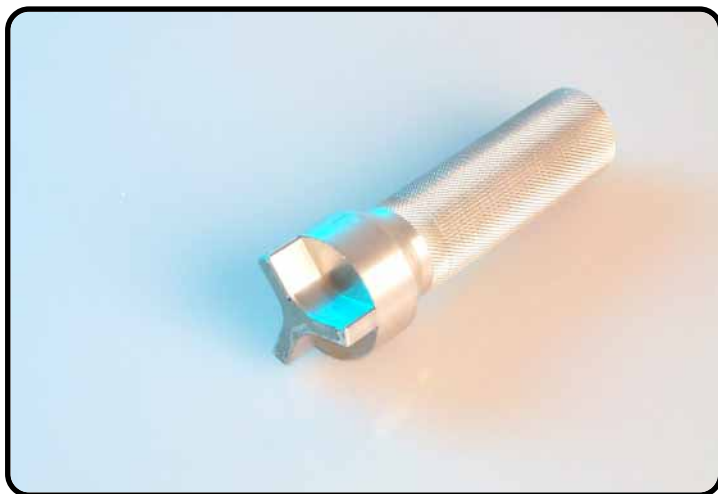
Special tools



**T612S**

Clamping block 4054.

- 4054 frontfork.



**T614**

Disassembling tool plastic retainer 4054.

- 4054 frontfork.

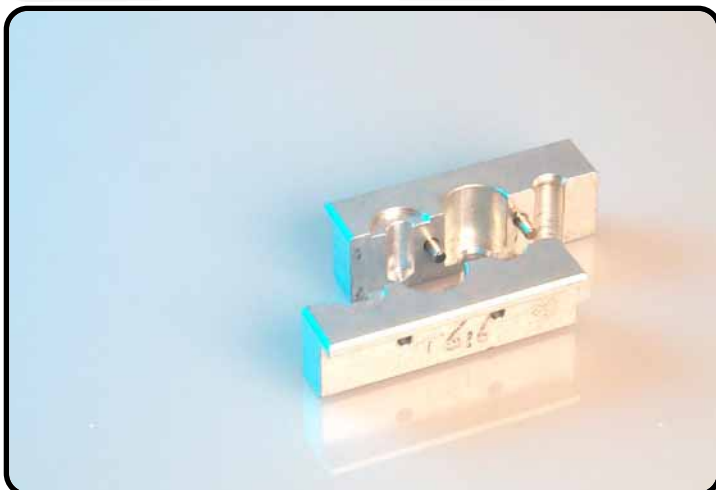


**T615**

Assembling tool seal 4054 MA.

- 4054 frontfork.

Special tools



**T616S**

Clamping block cartridge 4054 MA.  
With 2 pins d5x23.8 / T613.

- 4054 frontfork.



**T619**

Disassembling pin DU-bush 4054.

- 4054 frontfork.



**T620**

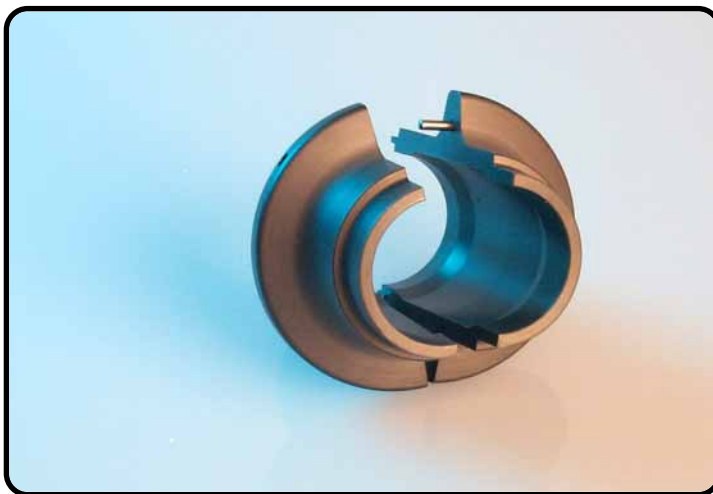
Assembling pin DU-bush 4054.

- 4054 Frontfork.

Special tools



**T625**  
Molykote Medium 33.



**T635S**  
Assembling tool seal and bearing.  
With 2 pins d3x27.8 / T710.

- 4054 frontfork.



**T639S**  
Clamping cartridge TA.  
With 2 pins d5x23.8 / T613.

- 4054 frontfork.

Special tools



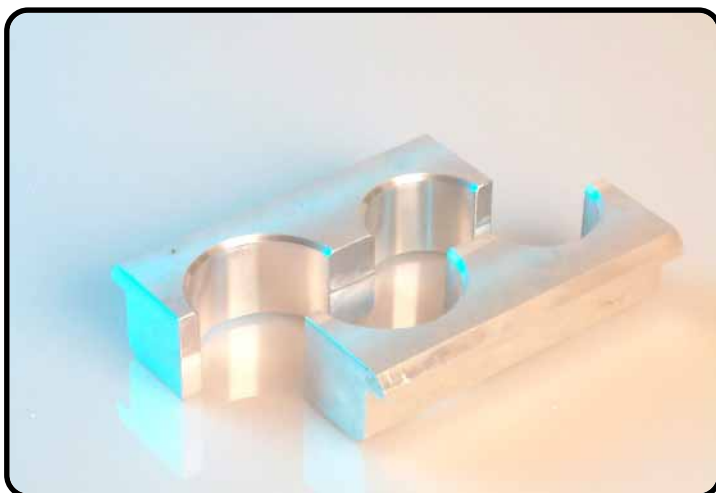
**T901**  
Assembling tool oilseal - inertube  
Extreme.

- Extreme frontfork.



**T902**  
Assembling tool seals and bearing  
Extreme.

- Extreme frontfork.



**T903S**  
Clamping block d50/d60.

- Extreme frontfork.

Special tools

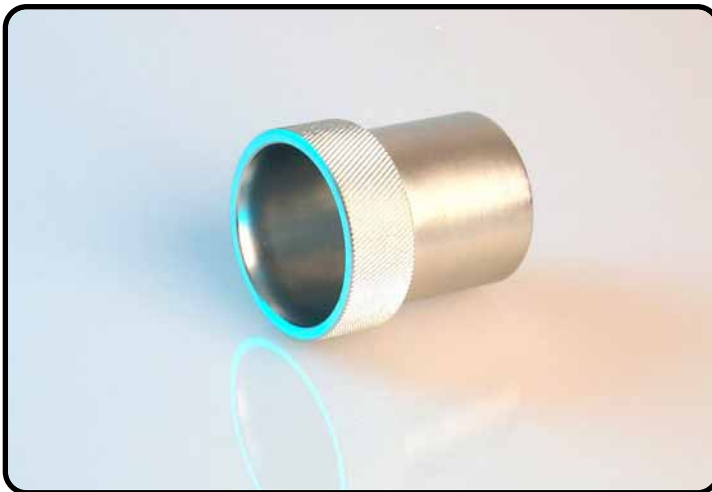


**T904S**

Stop d51 for clamping block T903S with outer-tube.

With O-ring 44x4 / 3612.0363.

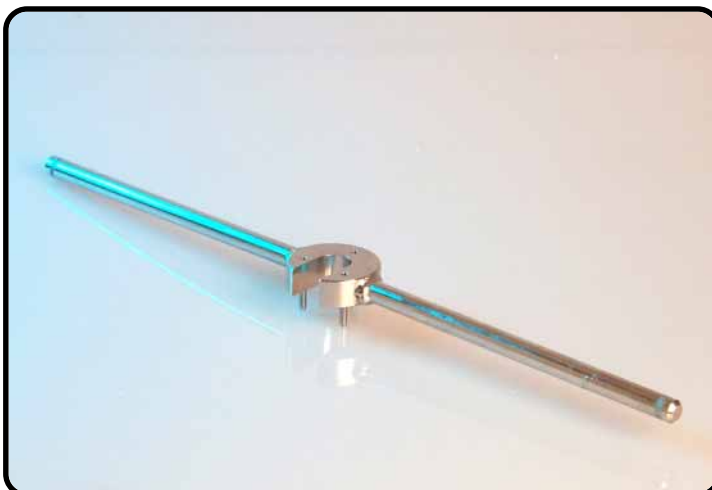
- Extreme frontfork.



**T905**

Assembling tool for guiding ring.

- Extreme frontfork.



**T907S**

Pinspanner 5060 1998.

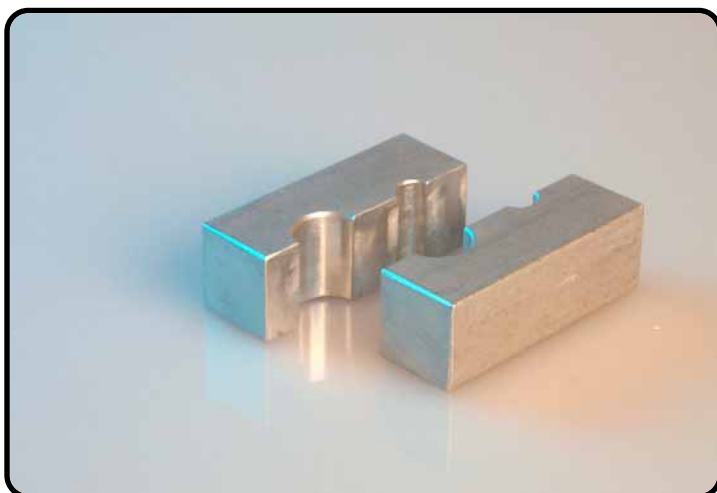
With 3 pins d4x23.8 / T707.

- Extreme frontfork.

Special tools



**T1201**  
Clamping bush d54.  
*- PDS 2002 shock absorber.*



**T1202S**  
Clamping block d10/d18.  
*- All PDS shock absorbers.*



**T1204**  
Assembling tool dirtscraper d18.  
*- All PDS shock absorbers.*



Special tools



**T1205**

Calibration thorn d18.

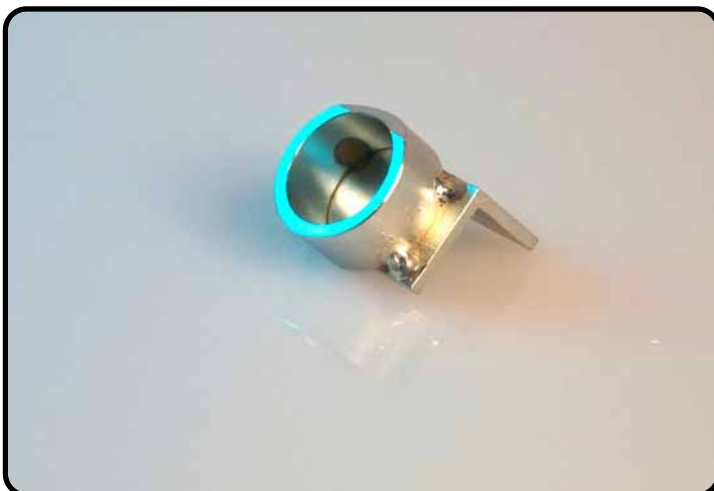
- All PDS shock absorbers.



**T1206**

Assembling tool heim joint PDS.

- All PDS shock absorbers.



**T1207S (A)**

Disassembling tool heim joint PDS.

- All PDS shock absorbers.

Special tools



**T1207S (B)**

Disassembling tool heim joint PDS.

- All PDS shock absorbers.



**T1208**

Dis- assembling tool DU-bush d18.

- All PDS shock absorbers.

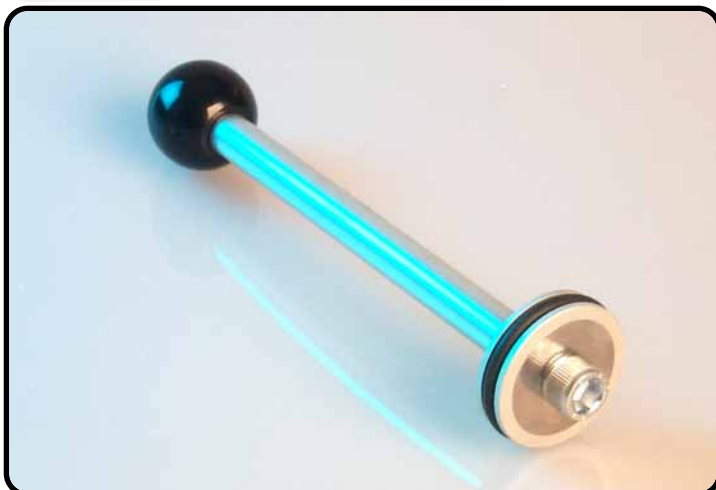


**T1209**

Support bush for dis- assembling DU-bush d18.

- All PDS shock absorbers.

Special tools



**T1210S**

Plunger d50.

- All PDS shock absorbers.



**T1214**

PDS piston center sleeve.

- All PDS shock absorbers.



**T1215**

Assembling tool seal d18.

- All PDS shock absorbers.

Special tools



**T1216**

Disassembling bush DU-bush adaptor.

- All PDS shock absorbers..



**T1218**

Adjustable pinspanner d3.

- PDS 1998 > 2001 shock absorber.



**T1233**

Hook spanner.

- PDS 2002 > shock absorber.

Special tools

**Air release tools for PDS shock absorbers.**



**T1219S**

Air release pump.  
With T1238S adaptor long.



**T1220S**

Air release tools KTM SXS 2000.

- O-ring 11x2.5
- O-ring 4x1.5
- T1220 pin d12
- T1221 needle
- T1222 adaptor M14x1

Special tools



**T1223**  
Adaptor M19.5x1.  
PDS OEM 2001.



**T1224**  
Needle L=217.8.  
PDS OEM 2001.



**T1225S**  
Air release tool PDS SXS 2001.

- O-ring 14x2
- O-ring 7x1.5
- O-ring 3.5x2
- T1226 tool mounting fork
- T1227 release plug
- T1228 needle
- T1229 adjusting screw
- T1230 Allen bolts

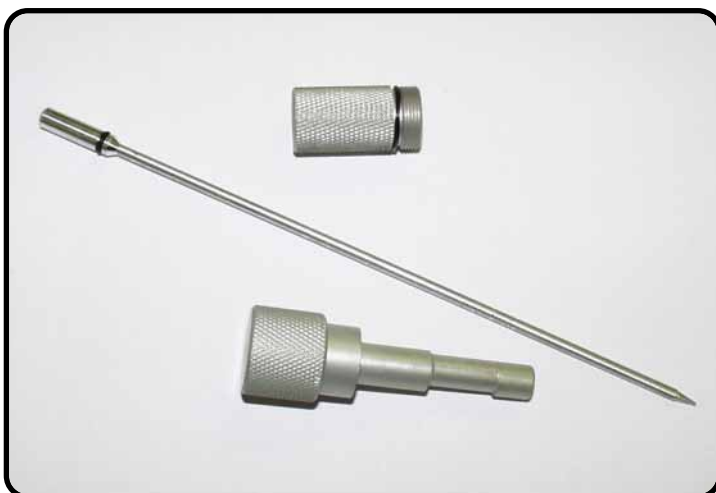
Special tools



**T1232S**

Air release tool PDS OEM 2001.

- O-ring 16x2
- O-ring 4x1.5
- T1220 pin d3
- T1223 adaptor
- T1224 needle



**T1236S**

Air release tool PDS OEM and SXS 2002>.

- O-ring 4x1.5
- O-ring 14x2
- T1220 pin d3
- T1227 adaptor
- T1231 needle

Special tools



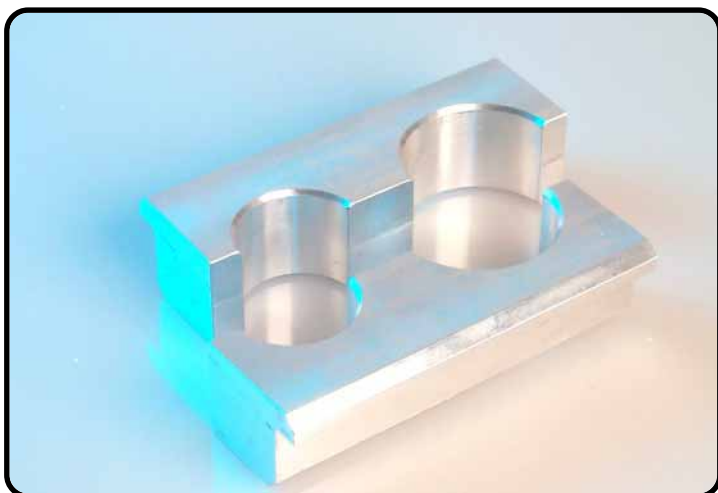
**T1401**  
Assembling tool seal d48.

- 48mm frontfork.



**T1402S**  
Assembling tool seal - bearing d48.  
With 2 pins d3x27.8 / T707.

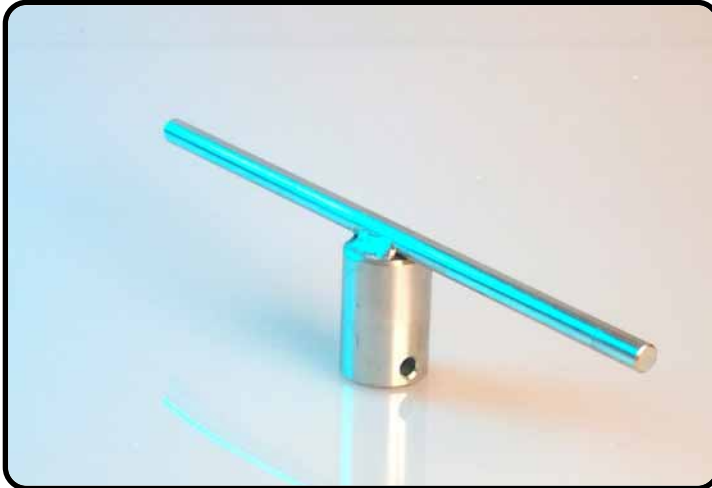
- 48mm frontfork.



**T1403S**  
Clamping block d48/d60.

- 48mm frontfork.





**T1404S**

Dis- / assembling tool inner-tube d48.  
In combination with T605.

- 48mm frontfork.

Special tools



**T1502S**

Air release adaptor DCC.  
For T144S.

- PDS 2002> shock absorber.



**T1504**

Dis- / assembling tool DU-bush d18.

- PDS 2003 shock absorber.