

Conversion factors

Length (distance)

Inches (in)	X 25.4	= Millimetres (mm)	X 0.0394	= Inches (in)
Feet (ft)	X 0.305	= Metres (m)	X 3.281	= Feet (ft)
Miles	X 1.609	= Kilometres (km)	X 0.621	= Miles

Volume (capacity)

Cubic inches (cu in; in ³)	X 16.387	= Cubic centimetres (cc; cm ³)	X 0.061	= Cubic inches (cu in; in ³)
Imperial pints (Imp pt)	X 0.568	= Litres (l)	X 1.76	= Imperial pints (Imp pt)
Imperial quarts (Imp qt)	X 1.137	= Litres (l)	X 0.88	= Imperial quarts (Imp qt)
Imperial quarts (Imp qt)	X 1.201	= US quarts (US qt)	X 0.833	= Imperial quarts (Imp qt)
US quarts (US qt)	X 0.946	= Litres (l)	X 1.057	= US quarts (US qt)
Imperial gallons (Imp gal)	X 4.546	= Litres (l)	X 0.22	= Imperial gallons (Imp gal)
Imperial gallons (Imp gal)	X 1.201	= US gallons (US gal)	X 0.833	= Imperial gallons (Imp gal)
US gallons (US gal)	X 3.785	= Litres (l)	X 0.264	= US gallons (US gal)

Mass (weight)

Ounces (oz)	X 28.35	= Grams (g)	X 0.035	= Ounces (oz)
Pounds (lb)	X 0.454	= Kilograms (kg)	X 2.205	= Pounds (lb)

Force

Ounces-force (ozf; oz)	X 0.278	= Newtons (N)	X 3.6	= Ounces-force (ozf; oz)
Pounds-force (lbf; lb)	X 4.448	= Newtons (N)	X 0.225	= Pounds-force (lbf; lb)
Newtons (N)	X 0.1	= Kilograms-force (kgf; kg)	X 9.81	= Newtons (N)

Pressure

Pounds-force per square inch (psi; lbf/in ² ; lb/in ²)	X 0.070	= Kilograms-force per square centimetre (kgf/cm ² ; kg/cm ²)	X 14.223	= Pounds-force per square inch (psi; lbf/in ² ; lb/in ²)
Pounds-force per square inch (psi; lbf/in ² ; lb/in ²)	X 0.068	= Atmospheres (atm)	X 14.696	= Pounds-force per square inch (psi; lbf/in ² ; lb/in ²)
Pounds-force per square inch (psi; lbf/in ² ; lb/in ²)	X 0.069	= Bars	X 14.5	= Pounds-force per square inch (psi; lbf/in ² ; lb/in ²)
Pounds-force per square inch (psi; lbf/in ² ; lb/in ²)	X 6.895	= Kilopascals (kPa)	X 0.145	= Pounds-force per square inch (psi; lbf/in ² ; lb/in ²)
Kilopascals (kPa)	X 0.01	= Kilograms-force per square centimetre (kgf/cm ² ; kg/cm ²)	X 98.1	= Kilopascals (kPa)
Millibar (mbar)	X 100	= Pascals (Pa)	X 0.01	= Millibar (mbar)
Millibar (mbar)	X 0.0145	= Pounds-force per square inch (psi; lbf/in ² ; lb/in ²)	X 68.947	= Millibar (mbar)
Millibar (mbar)	X 0.75	= Millimetres of mercury (mmHg)	X 1.333	= Millibar (mbar)
Millibar (mbar)	X 0.401	= Inches of water (inH ₂ O)	X 2.491	= Millibar (mbar)
Millimetres of mercury (mmHg)	X 0.535	= Inches of water (inH ₂ O)	X 1.868	= Millimetres of mercury (mmHg)
Inches of water (inH ₂ O)	X 0.036	= Pounds-force per square inch (psi; lbf/in ² ; lb/in ²)	X 27.68	= Inches of water (inH ₂ O)

Torque (moment of force)

Pounds-force inches (lbf in; lb in)	X 1.152	= Kilograms-force centimetre (kgf cm; kg cm)	X 0.868	= Pounds-force inches (lbf in; lb in)
Pounds-force inches (lbf in; lb in)	X 0.113	= Newton metres (Nm)	X 8.85	= Pounds-force inches (lbf in; lb in)
Pounds-force inches (lbf in; lb in)	X 0.083	= Pounds-force feet (lbf ft; lb ft)	X 12	= Pounds-force inches (lbf in; lb in)
Pounds-force feet (lbf ft; lb ft)	X 0.138	= Kilograms-force metres (kgf m; kg m)	X 7.233	= Pounds-force feet (lbf ft; lb ft)
Pounds-force feet (lbf ft; lb ft)	X 1.356	= Newton metres (Nm)	X 0.738	= Pounds-force feet (lbf ft; lb ft)
Newton metres (Nm)	X 0.102	= Kilograms-force metres (kgf m; kg m)	X 9.804	= Newton metres (Nm)

Power

Horsepower (hp)	X 745.7	= Watts (W)	X 0.0013	= Horsepower (hp)
-----------------	---------	-------------	----------	-------------------

Velocity (speed)

Miles per hour (miles/hr; mph)	X 1.609	= Kilometres per hour (km/hr; kph)	X 0.621	= Miles per hour (miles/hr; mph)
--------------------------------	---------	------------------------------------	---------	----------------------------------

Fuel consumption*

Miles per gallon, Imperial (mpg)	X 0.354	= Kilometres per litre (km/l)	X 2.825	= Miles per gallon, Imperial (mpg)
Miles per gallon, US (mpg)	X 0.425	= Kilometres per litre (km/l)	X 2.352	= Miles per gallon, US (mpg)

Temperature

Degrees Fahrenheit = (°C x 1.8) + 32 Degrees Celsius (Degrees Centigrade; °C) = (°F - 32) x 0.56

* It is common practice to convert from miles per gallon (mpg) to litres/100 kilometres (l/100km), where mpg (Imperial) x l/100 km = 282 and mpg (US) x l/100 km = 235

Index

A

About this manual, 0-5
 AC regulator, check and replacement, 4-8
 Air cleaner housing, removal and installation, 3-8
 Air filter element, cleaning, 1-11
 Alternator stator coils and rotor, check and replacement, 4-6

B

Battery
 charging, 4-2
 inspection and maintenance, 4-2
Bodywork and frame, 7-1
Brake
 caliper, removal, overhaul and installation, 6-4
 disc, inspection, removal and installation, 6-6
 drum and shoes, removal, inspection and installation, 6-7
 general information, 6-3
 hoses and lines, inspection and replacement, 6-13
 lever and pedal freeplay, check and adjustment, 1-6
 light switches, check and replacement, 4-4
 master cylinder removal, overhaul and installation
 front, 6-9
 rear, 6-11
 pads, replacement, 6-3
 pedal, removal and installation, 6-13
 system bleeding, 6-14
 system, general check, 1-5
Brakes, wheels and tires, 6-1 through 6-20
Bulbs, replacement, 4-3
Buying parts, 0-5

C

Cable, throttle, removal, installation and adjustment, 3-8
 Caliper, brake, removal, overhaul and installation, 6-4
 Cam chain tensioner, removal, inspection and installation, 2-12
 Camshaft sprocket and primary drive gear, removal, inspection and installation, 2-32
 Camshaft, guides and chain, removal and installation, 2-14
Carburetor
 disassembly, cleaning and inspection, 3-6
 overhaul, general information, 3-5
 reassembly and float height check, 3-8
 removal and installation, 3-5
Cautions, Notes and Warnings, 0-5
CDI unit, harness check, removal and installation, 4-10
Chain, removal, cleaning, inspection and installation, 5-16
Charcoal canister, evaporative emission control system, check, 1-19
Charging system
 leakage and output test, 4-6
 testing, general information and precautions, 4-6
Chemicals and lubricants, 0-16
Choke, operation check, 1-9
Clutch
 check and freeplay adjustment, 1-8
 general information, 2-7
 removal, inspection and installation, 2-25
Crankcase
 breather system, check, 1-19
 components, inspection and servicing, 2-39
 disassembly and reassembly, 2-37
Crankshaft and balancer, removal, inspection and installation, 2-45
Cylinder compression, check, 1-14

Cylinder head

- and valves, disassembly, inspection and reassembly, 2-17
- cover and rocker arms, removal, inspection and installation, 2-10
- removal and installation, 2-16

Cylinder, engine, removal and installation, 2-21**D****Decompressor**

- freeplay, check and adjustment, 1-16
- lever and cable, removal and installation, 2-34

Diagnosis, 0-17**Disc, brake, inspection, removal and installation, 6-6****Drive chain**

- and sprockets, check, adjustment and lubrication, 1-18
- removal, cleaning, inspection and installation, 5-16

E**Electrical system, 4-1****Electrical troubleshooting, 4-2****Engine**

- cam chain tensioner, removal, inspection and installation, 2-12
- camshaft, guides and chain, removal and installation, 2-14
- clutch, removal, inspection and installation, 2-25
- crankcase components, inspection and servicing, 2-39
- crankcase, disassembly and reassembly, 2-37
- crankshaft and balancer, removal, inspection and installation, 2-45
- cylinder head and valves, disassembly, inspection and reassembly, 2-17
- cylinder head cover and rocker arms, removal, inspection and installation, 2-10
- cylinder head, removal and installation, 2-16
- cylinder, removal and installation, 2-21
- decompressor lever and cable, removal and installation, 2-34
- disassembly and reassembly, general information, 2-10
- external oil line and hoses, removal and installation, 2-37
- external shift mechanism, removal, inspection and installation, 2-33
- general information, 2-8
- initial start-up after overhaul, 2-40, 2-46
- kickstarter, removal, inspection and installation, 2-34
- oil change and filter screen cleaning, 1-9
- oil level, check, 1-5
- oil pump and internal pipe, removal, inspection and installation, 2-30
- operations possible with the engine in the frame, 2-8
- operations requiring engine removal, 2-8
- piston rings, installation, 2-24
- piston, removal, inspection and installation, 2-22
- primary drive gear and camshaft sprocket removal, inspection and installation, 2-32
- recommended break-in procedure, 2-46
- removal and installation, 2-8
- repair, major, general note, 2-8
- transmission shafts, removal, inspection and installation, 2-42
- valves, valve seats and guides, servicing, 2-17

Engine, clutch and transmission, 2-1 through 2-46**Evaporative emission control system, check, 1-19****Exhaust system**

- inspection and spark arrester cleaning, 1-13
- removal and installation, 3-9

F**Fasteners, check, 1-17****Fault finding, 0-17****Fender, removal and installation**

- front, 7-2
- rear, 7-2

Filter cleaning

- air, 1-11
- fuel, 1-12
- oil, 1-9

Footpegs, removal and installation, 7-2**Fork, oil change, 1-19****Forks**

- disassembly, inspection and reassembly, 5-4
- removal and installation, 5-4

Frame and bodywork, 7-1 through 7-3**Frame, general information, inspection and repair, 7-3****Fuel**

- carburetor
 - disassembly, cleaning and inspection, 3-6
 - overhaul, general information, 3-5
 - reassembly and float height check, 3-8
 - removal and installation, 3-5
- filter cleaning, 1-12
- general information, 3-2
- idle fuel/air mixture adjustment, 3-3
- system check, 1-12
- tank
 - cleaning and repair, 3-3
 - removal and installation, 3-2
- throttle cable, removal, installation and adjustment, 3-8

Fuel and exhaust systems, 3-1 through 3-10**Fuse, check and replacement, 4-3****G****General specifications, 0-7****H****Handlebar switches, check and replacement, 4-4****Handlebar, removal, inspection and installation, 5-3****Headlight aim, check and adjustment, 4-4****Hoses and lines, brakes, inspection and replacement, 6-13****I****Identification numbers, 0-6****Idle fuel/air mixture adjustment, 3-3****Idle speed, check and adjustment, 1-16****Ignition and electrical system, 4-1 through 4-10****Ignition system**

- CDI unit, harness check, removal and installation, 4-10
- check, 4-9
- coil, check, removal and installation, 4-9
- general information, 4-2, 4-8
- pulse generator, check, removal and installation, 4-10
- switch (XL600R), check and replacement, 4-4
- timing, 1-16

Introduction to the Honda XL/XR600, 0-4**K****Kickstarter, removal, inspection and installation, 2-34**

L

Lubricants and chemicals, 0-16
Lubricants and fluids, recommended, 1-3
Lubrication, general, 1-9

M

Maintenance, 1-1 through 1-20
Maintenance schedule, 1-4
Maintenance techniques, 0-8

N

Notes, Cautions and Warnings, 0-5

O

Odometer/speedometer and cable, removal and installation, 4-5
Oil change and filter screen cleaning, 1-9
Oil level, check, 1-5
Oil line and hoses, external, removal and installation, 2-37
Oil pump and internal pipe, removal, inspection and installation, 2-30

P

Pads, brake, replacement, 6-3
Pedal freeplay and brake lever, check and adjustment, 1-6
Piston rings, installation, 2-24
Piston, removal, inspection and installation, 2-22
Primary drive gear and camshaft sprocket removal, inspection and installation, 2-32
Pulse generator, check, removal and installation, 4-10

R

Rear shock absorber and suspension linkage, removal, inspection and installation, 5-12
Recommended lubricants and fluids, 1-3
Regulator/rectifier (XL600R), replacement, 4-8
Rocker arms and cylinder head cover, removal, inspection and installation, 2-10
Rotor, brake, inspection, removal and installation, 6-6
Routine maintenance, 1-1 through 1-20
Routine maintenance intervals, 1-4

S

Safe repair practices, 0-14
Scheduled maintenance, 1-4
Seat, removal and installation, 7-1
Shift mechanism, external, removal, inspection and installation, 2-33
Shock absorber and suspension linkage, removal, inspection and installation, 5-12

Side covers, removal and installation, 7-2
Sidestand, check, 1-20
Sidestand, removal and installation, 7-2
Skid plate/bars, removal and installation, 7-3
Spark arrester, cleaning, 1-13
Spark plug
 replacement, 1-13
 type and gap, 1-1
Specifications, general, 0-7
Speedometer/odometer and cable, removal and installation, 4-5
Sprockets and drive chain, check, adjustment and lubrication, 1-18
Sprockets, check and replacement, 5-17
Stator coils, alternator and rotor, check and replacement, 4-6
Steering head bearings
 check and adjustment, 1-17
 replacement, 5-9
Steering, suspension and final drive, 5-1 through 5-18
Suspension linkage and rear shock absorber, removal, inspection and installation, 5-12
Suspension, check, 1-17
Swingarm
 bearings
 check, 5-14
 replacement, 5-14
 removal and installation, 5-14

T

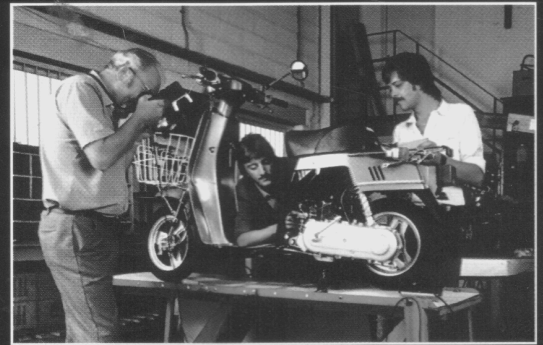
Throttle cable, removal, installation and adjustment, 3-8
Throttle operation/grip freeplay, check and adjustment, 1-8
Timing, ignition, 1-16
Tires, removal and installation, 6-20
Tires/wheels, general check, 1-7
Tools, 0-9
Transmission
 general information, 2-7
 shafts, removal, inspection and installation, 2-42
Troubleshooting, 0-17
Troubleshooting, electrical, 4-2
Tubes, repair, 6-20
Tune-up and routine maintenance, 1-1 through 1-20
Tune-up and routine maintenance, introduction, 1-5

V

Valve clearances, check and adjustment, 1-15
Valves, valve seats and guides, servicing, 2-17

W

Warnings, Cautions and Notes, 0-5
Wheel and rear coupling bearings, inspection and maintenance, 6-16
Wheels
 alignment check, 6-16
 inspection, removal and installation, 6-14
Wheels/tires, general check, 1-7
Working facilities, 0-13



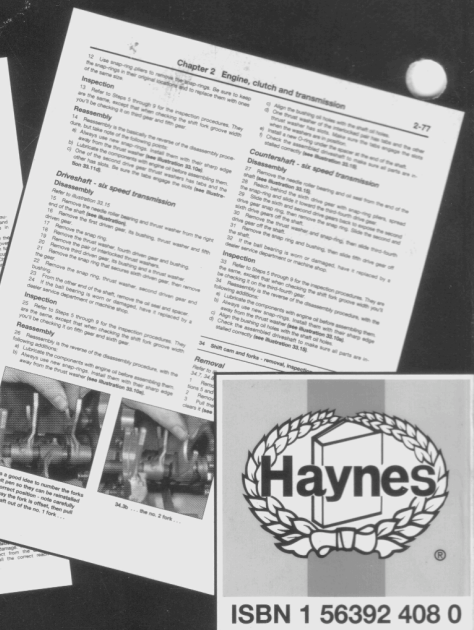
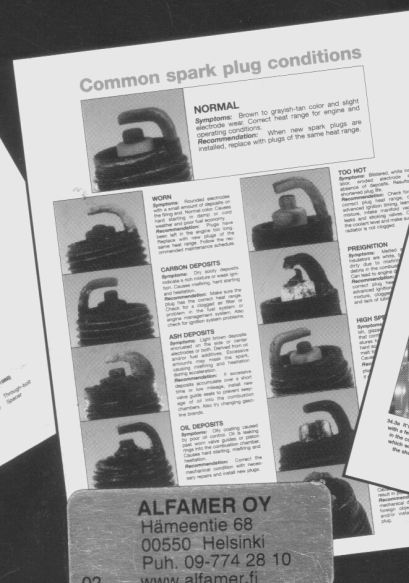
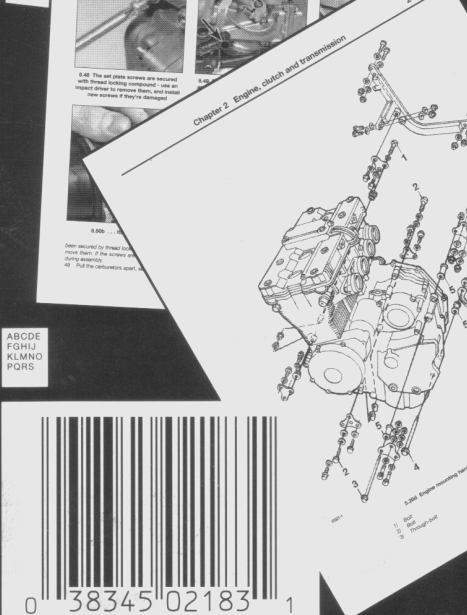
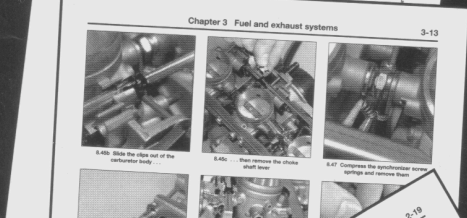
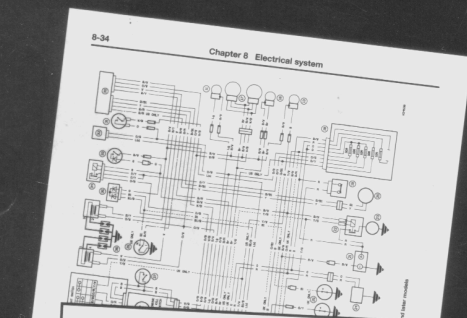
Models covered by this manual:

Honda XL600R, 1983 through 1987

Honda XR600R, 1985 through 2000

Haynes Manuals Explain Best:

- Step-by-step procedures accompanied by hundreds of photos and line drawings
- Comprehensive routine maintenance and fault diagnosis sections
- Every manual based on a complete teardown and rebuild
- Written from hands-on experience using common tools
- Detailed wiring diagrams



ISBN 1 56392 408 0

ALFAMER OY
Hämeentie 68
00550 Helsinki
Puh. 09-774 28 10
www.alfamer.fi

